

## OR VALVE

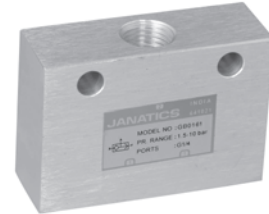
### Series GB

Cat No GB - 01 - 01

### OR VALVE - M5, G1/8, G1/4

#### Function

- OR valve delivers air at the outlet (A) always supplied by higher pressure (X or Y)
- If two signals of different pressure is applied, the higher pressure is connected to outlet (A)



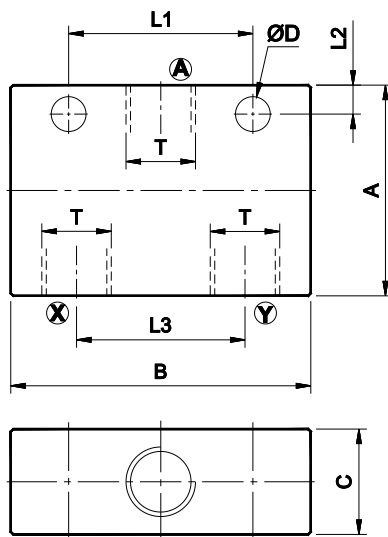
#### Application

An OR valve (or shuttle valve) is used to allow a function to be executed from either of 2 different places. An output signal is present whenever at least one of 2 signal inputs is activated. It can be used in safety circuits and logic controls.

#### Technical Specifications

Model	M5	1/8	1/4
Medium	Compressed air - Dry, Filtered, Lubricated		
Operating pressure range	1.5 - 10 bar		
Ambient Temperature	5° - 60° C		
Flow <sup>®</sup> (X → A) (Y → A)	120 lpm	250 lpm	550 lpm
Materials of construction	Aluminium, Nitrile, Plastic		

<sup>®</sup> Inlet pressure 6 bar, and pressure drop 1 bar



Sl. No	T	A	B	C	L1	L2	L3	ØD	Ordering No
1	M5	25	37	15	10	3.5	20	3.2	GB0170
2	G1/8	30	43	15	24	4	24	4.5	GB0160
3	G1/4	40	57	20	35	5.5	32	6.6	GB0161

#### How to Order

While ordering OR valve, mention the ordering number given in the corresponding tables.